

CONCORD ROBBINS
WATER SUPPLY CORPORATION

PO Box 35
Marquez, TX 77865
www.concordrobbins.com

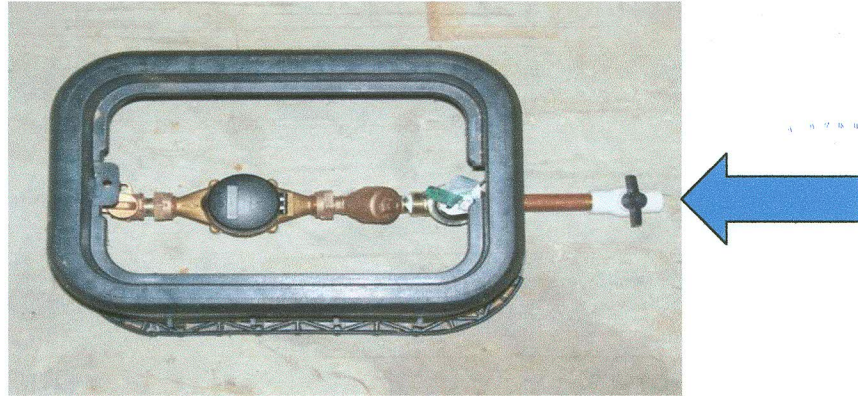
Ph. 903-626-4330
Fax 903-626-4377
customerservice@concordrobbins.com

CUSTOMER SERVICE INSPECTION INSTRUCTIONS

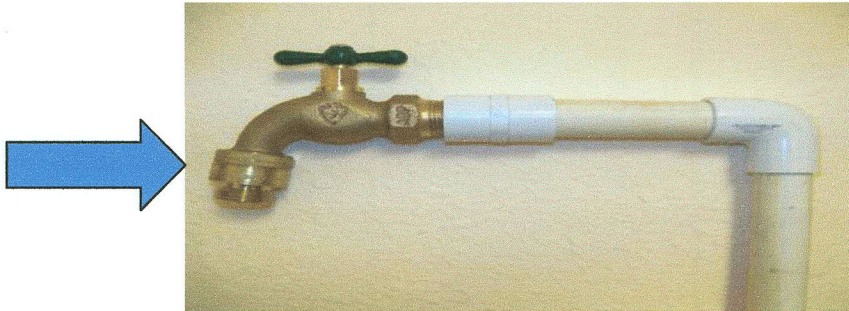
Once your meter is installed you will need to have a C.S.I. completed within 10 days. **Owner must be present for inspection unless previous arrangements have been made.**

Here are the things that must be in place before you call:

Install a shut off valve outside and within 24 inches of meter box.



Must have permanently installed Hose Bibbs (Atmospheric Vacuum Breakers) on every outside faucet. These can be purchased from a hardware store or from Concord Robbins WSC at cost.



Call 903-626-4330 to set up your appointment.

If inspection finds anything not within state compliance, water will be turned off until corrected this includes a cross connection or multiple residents on one meter.